

pullman

RESIDENCES

---

NEWTON

FREEHOLD • DISTRICT 11

# Site Plan

# Schematic Chart



18 Dunearn Road Singapore 309421

Unit Floor	01	02	03	04	05	06	07	08	09	10	11	12
30	PH-2	PH-3	PH-3	PH-2	PH-1	PH-1	PH-2	PH-4	PH-5	PH-2	PH-1	PH-1
29	B1	C1	C1	B1	A1	A1	B1	C2	D1	B1	A1	A1
28	B1	C1	C1	B1	A1	A1	B1	C2	D1	B1	A1	A1
27	B1	C1	C1	B1	A1	A1	B1	C2	D1	B1	A1	A1
26	B1	C1	C1	B1	A1	A1	B1	C2	D1	B1	A1	A1
25	B1	C1	C1	B1	A1	A1	B1	C2	D1	B1	A1	A1
24	B1	C1	C1	B1	A1	A1	B1	C2	D1	B1	A1	A1
23	B1	C1	C1	B1	A1	A1	B1	C2	D1	B1	A1	A1
22	B1	C1	C1	B1	A1	A1	B1	C2	D1	B1	A1	A1
21	B1	C1	C1	B1	A1	A1	B1	C2	D1	B1	A1	A1
20	B1	C1	C1	B1	A1	A1	B1	C2	D1	B1	A1	A1
19	B1	C1	C1	B1	A1	A1	B1	C2	D1	B1	A1	A1
18	B1	C1	C1	B1	A1	A1	B1	C2	D1	B1	A1	A1
17	B1	C1	C1	B1	A1	A1	B1	C2	D1	B1	A1	A1
16	B1	C1	C1	B1	A1	A1	B1	C2	D1	B1	A1	A1
15	B1	C1	C1	B1	A1	A1	B1	C2	D1	B1	A1	A1
14	B1	C1	C1	B1	A1	A1	B1	C2	D1	B1	A1	A1
13	B1	C1	C1	B1	A1	A1	B1	C2	D1	B1	A1	A1
12	B1	C1	C1	B1	A1	A1	B1	C2	D1	B1	A1	A1
11	B1	C1	C1	B1	A1	A1	B1	C2	D1	B1	A1	A1
10	B1	C1	C1	B1	A1	A1	B1	C2	D1	B1	A1	A1
09	B1	C1	C1	B1	A1	A1	B1	C2	D1	B1	A1	A1
08	B1	C1	C1	B1	A1	A1	B1	C2	D1	B1	A1	A1
07	B1	C1	C1	B1	A1	A1	B1	C2	D1	B1	A1	A1
06	B1	C1	C1	B1	A1	A1	B1	C2	D1	B1	A1	A1
05	B1	C1	C1	B1	A1	A1	B1	C2	D1	B1		
04	B1	C1	C1	B1	A1	A1	B1	C2	D1	B1		
03	B1	C1	C1	B1	A1	A1	B1	C2	D1	B1		
02	B1-P	C1-P	C1	B1	A1	A1	B1	C2	D1-P	B1-P		
1E	Carpark											
1D	Carpark											
1C	Carpark											
1B	Carpark											
01/1A	Lobby/Carpark											
B	Carpark											

## GROUND LEVEL:

- 1 Pedestrian Entrance
- 2 Guardhouse
- 3 Arrival Boulevard
- 4 Grand Concierge Lobby
- 5 Grand Drop-Off
- 6 Feature Sculpture
- 7 The Verandah with Teppanyaki Grill
- 8 Garden Courtyard
- 9 Party Lawn
- 10 Aroma Trail
- 11 Bicycle Hub
- 12 Kid's Play
- 13 Recreational Tennis Court with Half Basketball Court
- 14 Substation
- 15 Gen Set
- 16 Management Office
- 17 Pneumatic Bin Centre
- 18 MDF Room

## LEVEL 2:

- 19 Pool Deck
- 20 50m Lap Pool
- 21 Aqua Deck
- 22 Dining Pavilion with BBQ
- 23 Club Lounge
- 24 Kid's Pool
- 25 Jacuzzi
- 26 Wellness Pool
- 27 Wellness Deck
- 28 Aqua Gym
- 29 Wellness Gym
- 30 Male/Female Changing Room with Steam Room

## ROOF LEVEL:

- 31 Water Tank

## LEGEND:

- 1-Bedroom
- 2-Bedroom
- 3-Bedroom
- 4-Bedroom

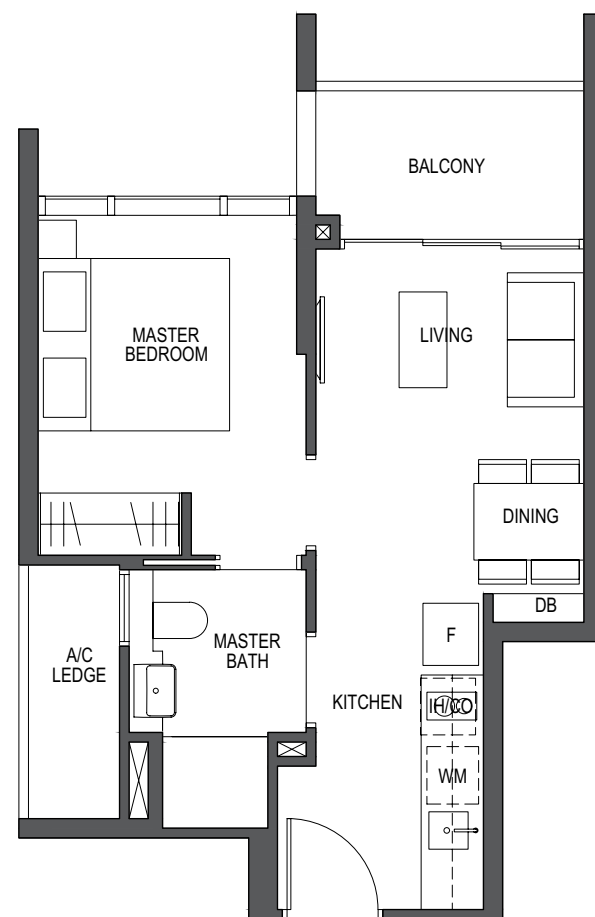
# 1-Bedroom

## TYPE A1

43 sq m / 463 sq ft

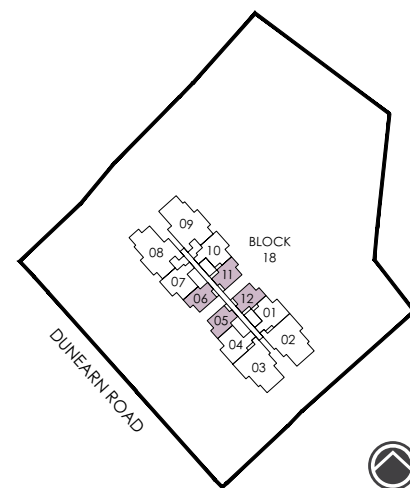
#02-06 to #29-06  
 #06-12 to #29-12  
 \*#02-05 to #29-05  
 \*#06-11 to #29-11

\*Mirror image



**LEGEND:**  
 F - Fridge  
 D - Dryer  
 IH - Induction Hob  
 DW - Dishwasher  
 GH - Gas Hob  
 DB - Distribution Board  
 WM - Washer cum Dryer  
 CO - Conventional Oven  
 W - Washer

All plans are subjected to amendments as may be approved by the relevant authorities. Floor areas are approximate measurements and are subjected to final survey. BP Approval No. A1720-00009-2018-BP01 dated 26/08/2019



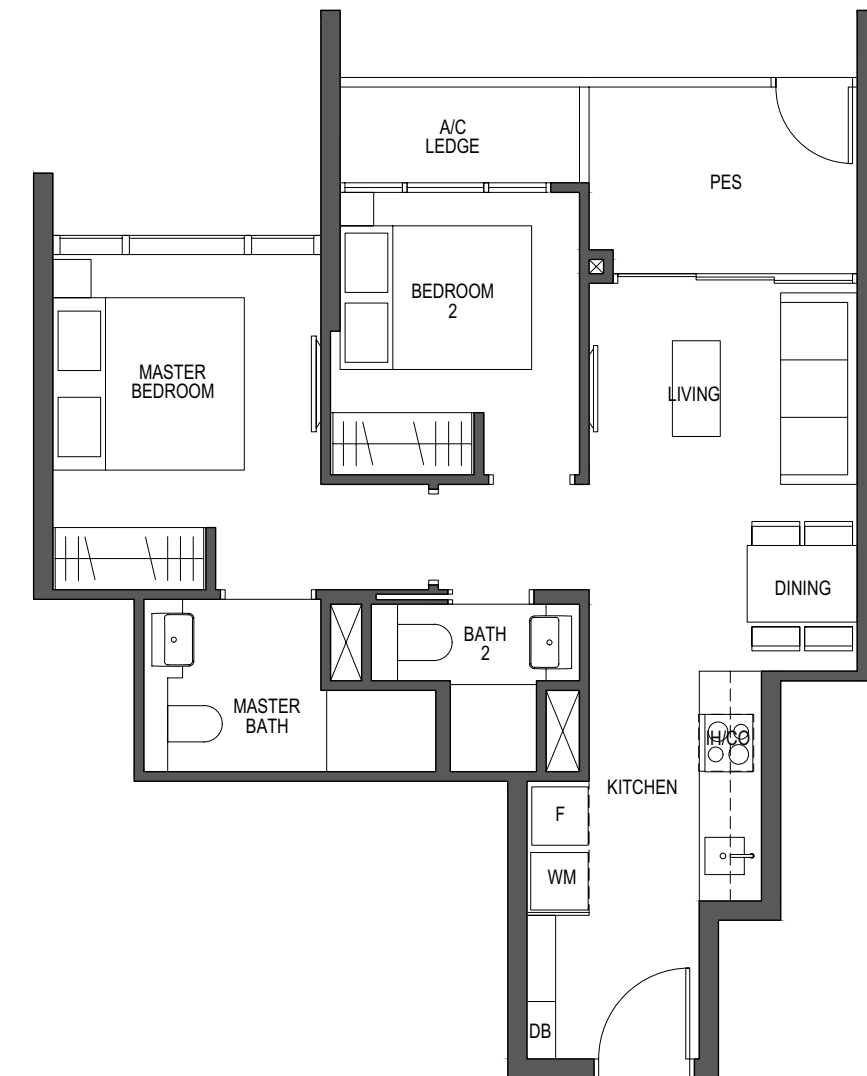
# 2-Bedroom

## TYPE B1-P

62 sq m / 667 sq ft

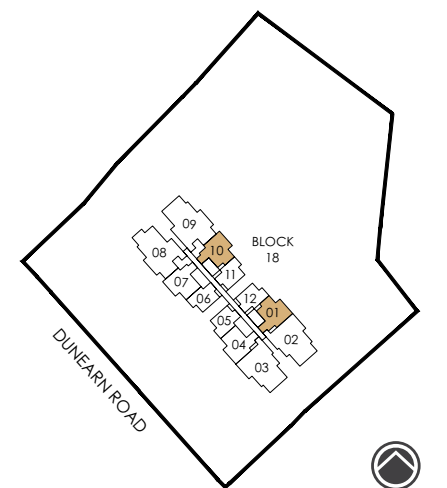
#02-01  
 \*#02-10

\*Mirror image



**LEGEND:**  
 F - Fridge  
 D - Dryer  
 IH - Induction Hob  
 DW - Dishwasher  
 GH - Gas Hob  
 DB - Distribution Board  
 WM - Washer cum Dryer  
 CO - Conventional Oven  
 W - Washer

All plans are subjected to amendments as may be approved by the relevant authorities. Floor areas are approximate measurements and are subjected to final survey. BP Approval No. A1720-00009-2018-BP01 dated 26/08/2019



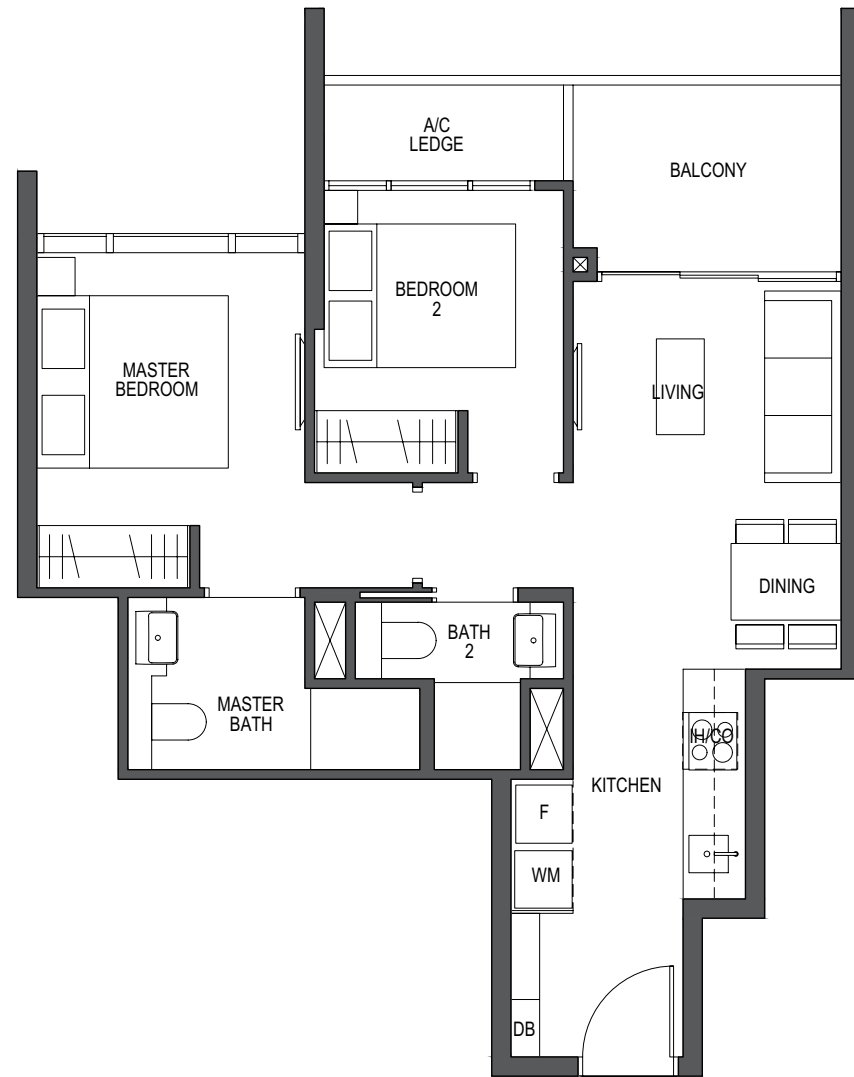
# 2-Bedroom

## TYPE B1

62 sq m / 667 sq ft

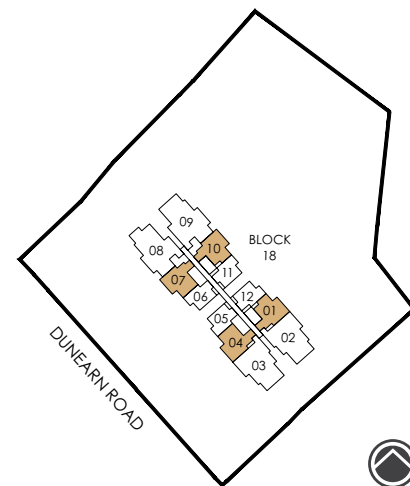
#02-07 to #29-07  
 #03-01 to #29-01  
 \*#02-04 to #29-04  
 \*#03-10 to #29-10

\*Mirror image



**LEGEND:**  
 F - Fridge  
 D - Dryer  
 IH - Induction Hob  
 DW - Dishwasher  
 GH - Gas Hob  
 DB - Distribution Board  
 WM - Washer cum Dryer  
 CO - Conventional Oven  
 W - Washer

All plans are subjected to amendments as may be approved by the relevant authorities. Floor areas are approximate measurements and are subjected to final survey. BP Approval No. A1720-00009-2018-BP01 dated 26/08/2019



# 3-Bedroom

## TYPE C1-P

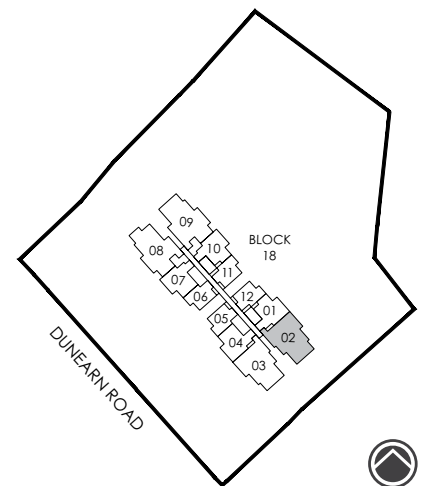
108 sq m / 1163 sq ft

#02-02



**LEGEND:**  
 F - Fridge  
 D - Dryer  
 IH - Induction Hob  
 DW - Dishwasher  
 GH - Gas Hob  
 DB - Distribution Board  
 WM - Washer cum Dryer  
 CO - Conventional Oven  
 W - Washer

All plans are subjected to amendments as may be approved by the relevant authorities. Floor areas are approximate measurements and are subjected to final survey. BP Approval No. A1720-00009-2018-BP01 dated 26/08/2019



# 3-Bedroom

## TYPE C1

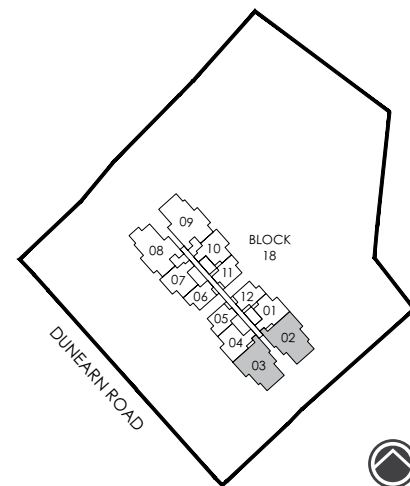
108 sq m / 1163 sq ft

#03-02 to #29-02  
\*#02-03 to #29-03

\*Mirror image



**LEGEND:**  
 F - Fridge  
 D - Dryer  
 IH - Induction Hob  
 DW - Dishwasher  
 GH - Gas Hob  
 DB - Distribution Board  
 WM - Washer cum Dryer  
 CO - Conventional Oven  
 W - Washer



All plans are subjected to amendments as may be approved by the relevant authorities. Floor areas are approximate measurements and are subjected to final survey. BP Approval No. A1720-00009-2018-BP01 dated 26/08/2019

# 3-Bedroom + Study

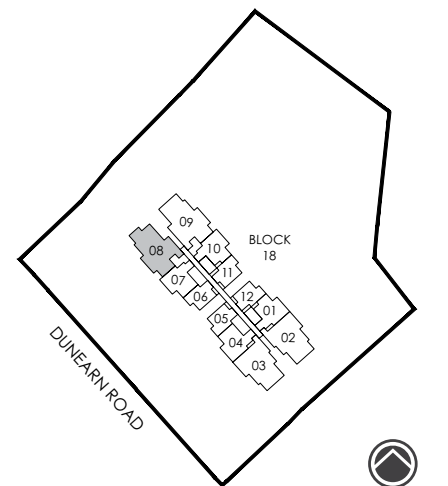
## TYPE C2

119 sq m / 1281 sq ft

#02-08 to #29-08



**LEGEND:**  
 F - Fridge  
 D - Dryer  
 IH - Induction Hob  
 DW - Dishwasher  
 GH - Gas Hob  
 DB - Distribution Board  
 WM - Washer cum Dryer  
 CO - Conventional Oven  
 W - Washer



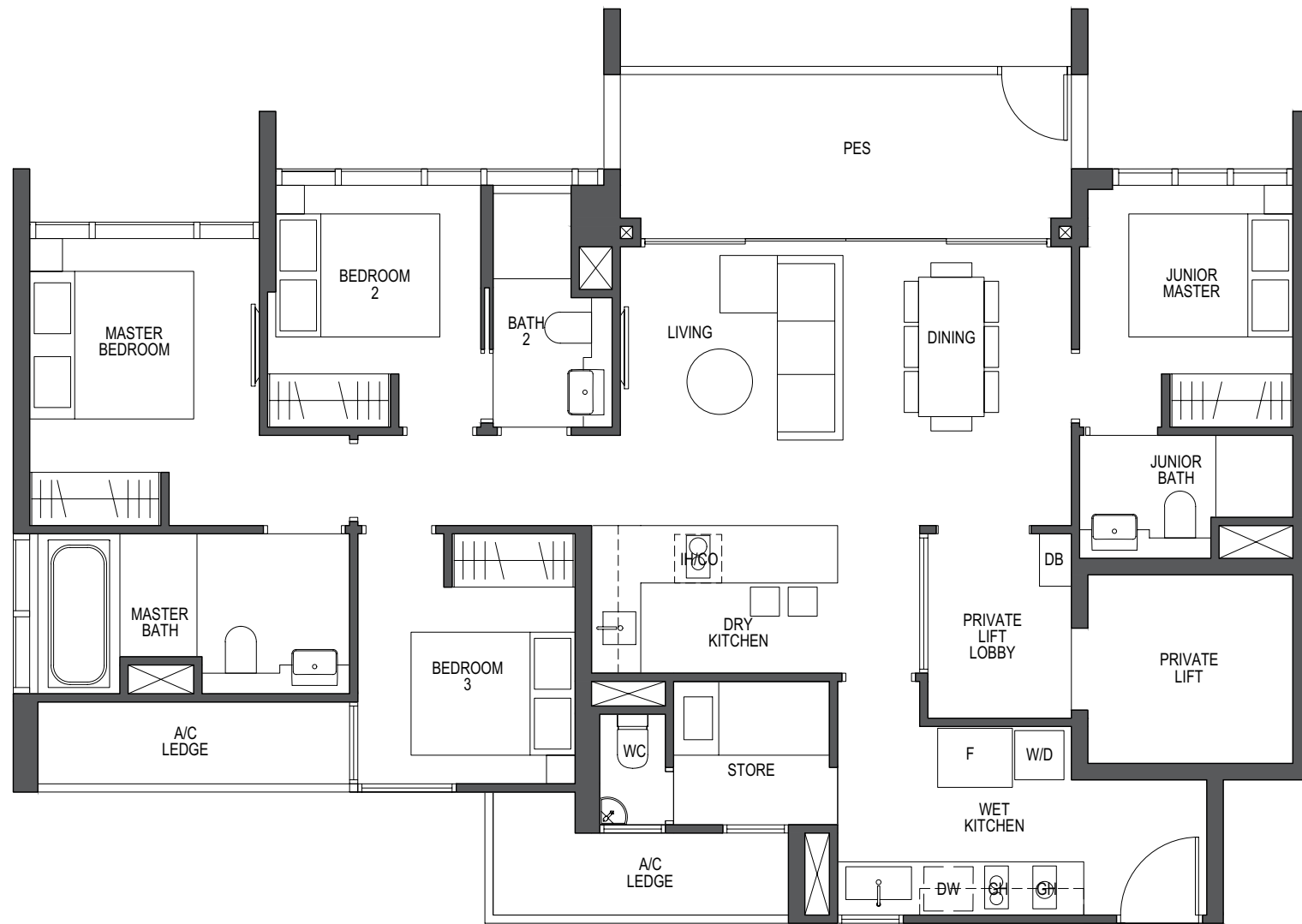
All plans are subjected to amendments as may be approved by the relevant authorities. Floor areas are approximate measurements and are subjected to final survey. BP Approval No. A1720-00009-2018-BP01 dated 26/08/2019

# 4-Bedroom

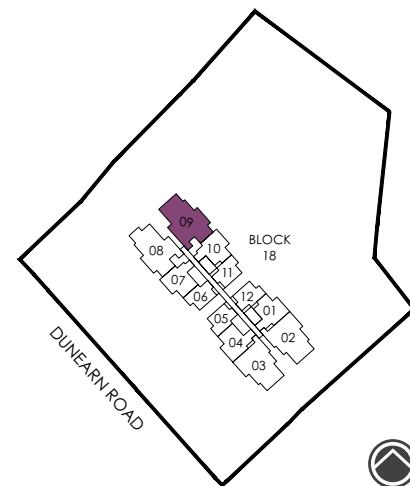
## TYPE D1-P

129 sq m / 1389 sq ft

#02-09



**LEGEND:**  
 F - Fridge  
 D - Dryer  
 IH - Induction Hob  
 DW - Dishwasher  
 GH - Gas Hob  
 DB - Distribution Board  
 WM - Washer cum Dryer  
 CO - Conventional Oven  
 W - Washer



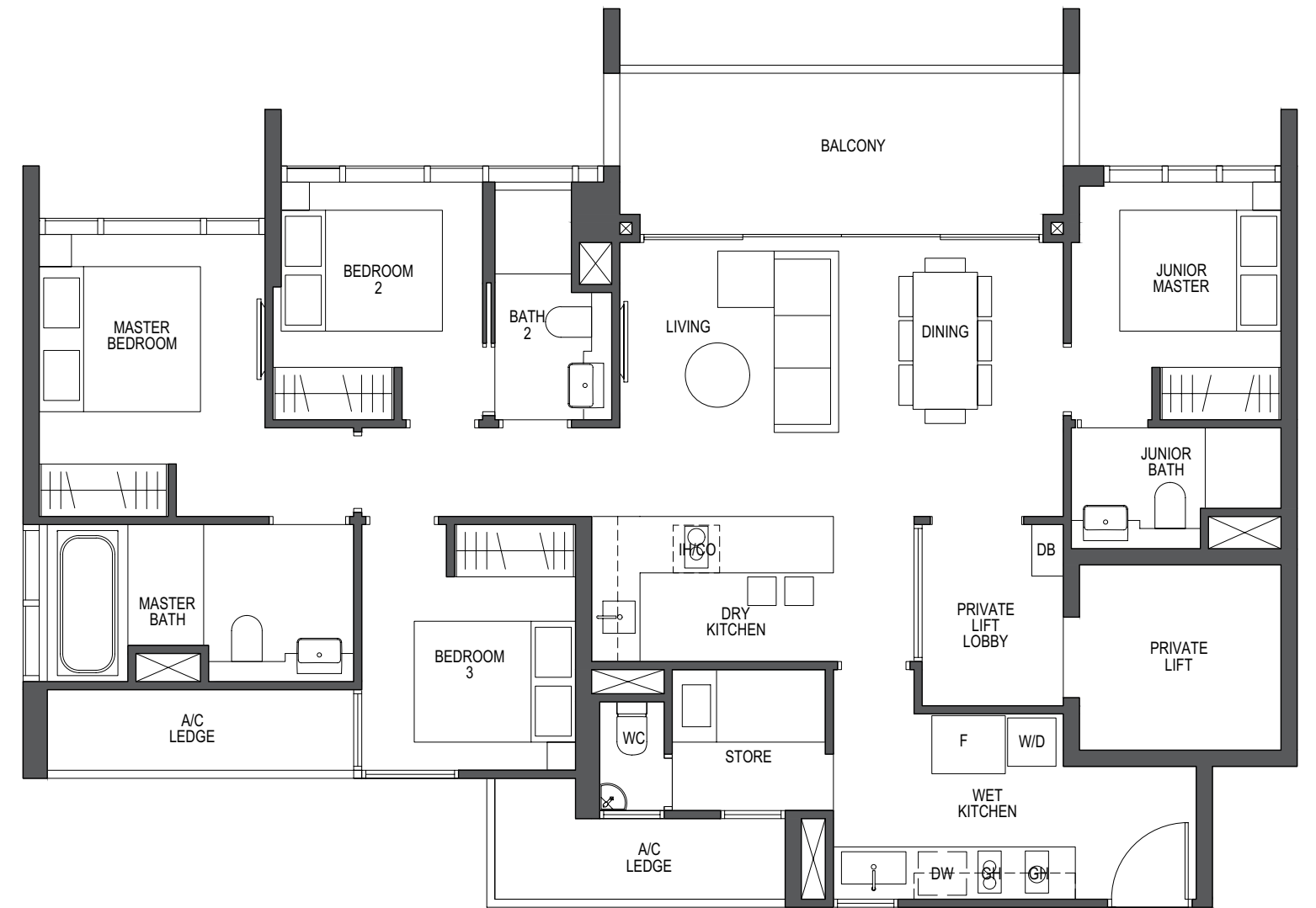
All plans are subjected to amendments as may be approved by the relevant authorities. Floor areas are approximate measurements and are subjected to final survey. BP Approval No. A1720-00009-2018-BP01 dated 26/08/2019

# 4-Bedroom

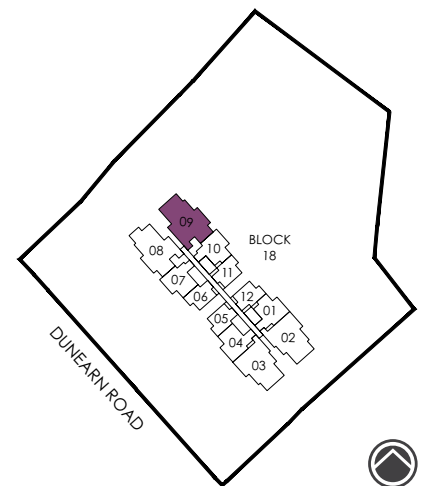
## TYPE D1

128 sq m / 1378 sq ft

#03-09 to #29-09



**LEGEND:**  
 F - Fridge  
 D - Dryer  
 IH - Induction Hob  
 DW - Dishwasher  
 GH - Gas Hob  
 DB - Distribution Board  
 WM - Washer cum Dryer  
 CO - Conventional Oven  
 W - Washer



All plans are subjected to amendments as may be approved by the relevant authorities. Floor areas are approximate measurements and are subjected to final survey. BP Approval No. A1720-00009-2018-BP01 dated 26/08/2019



# Penthouse

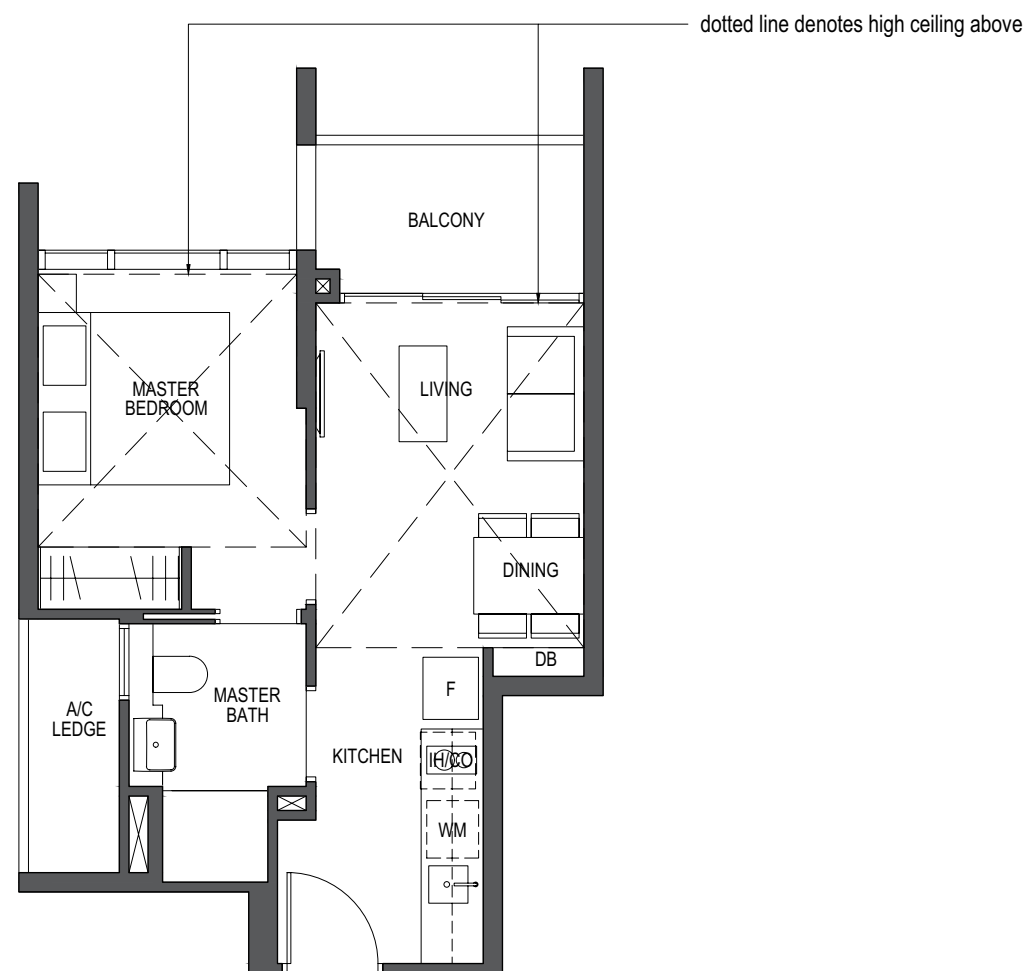
## TYPE PH-1

### 1-Bedroom

43 sq m / 463 sq ft

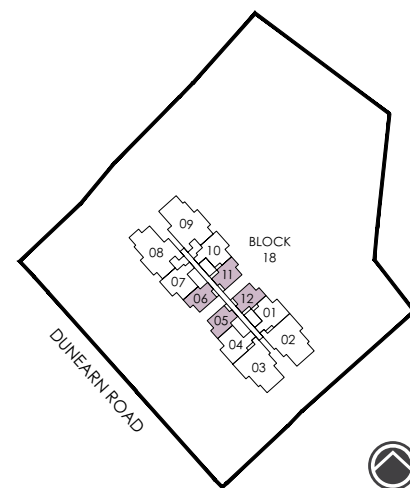
#30-06 & #30-12  
\*#30-05 & #30-11

\*Mirror image



**LEGEND:**  
 F - Fridge  
 D - Dryer  
 IH - Induction Hob  
 DW - Dishwasher  
 GH - Gas Hob  
 DB - Distribution Board  
 WM - Washer cum Dryer  
 CO - Conventional Oven  
 W - Washer

All plans are subjected to amendments as may be approved by the relevant authorities. Floor areas are approximate measurements and are subjected to final survey. BP Approval No. A1720-00009-2018-BP01 dated 26/08/2019



# Penthouse

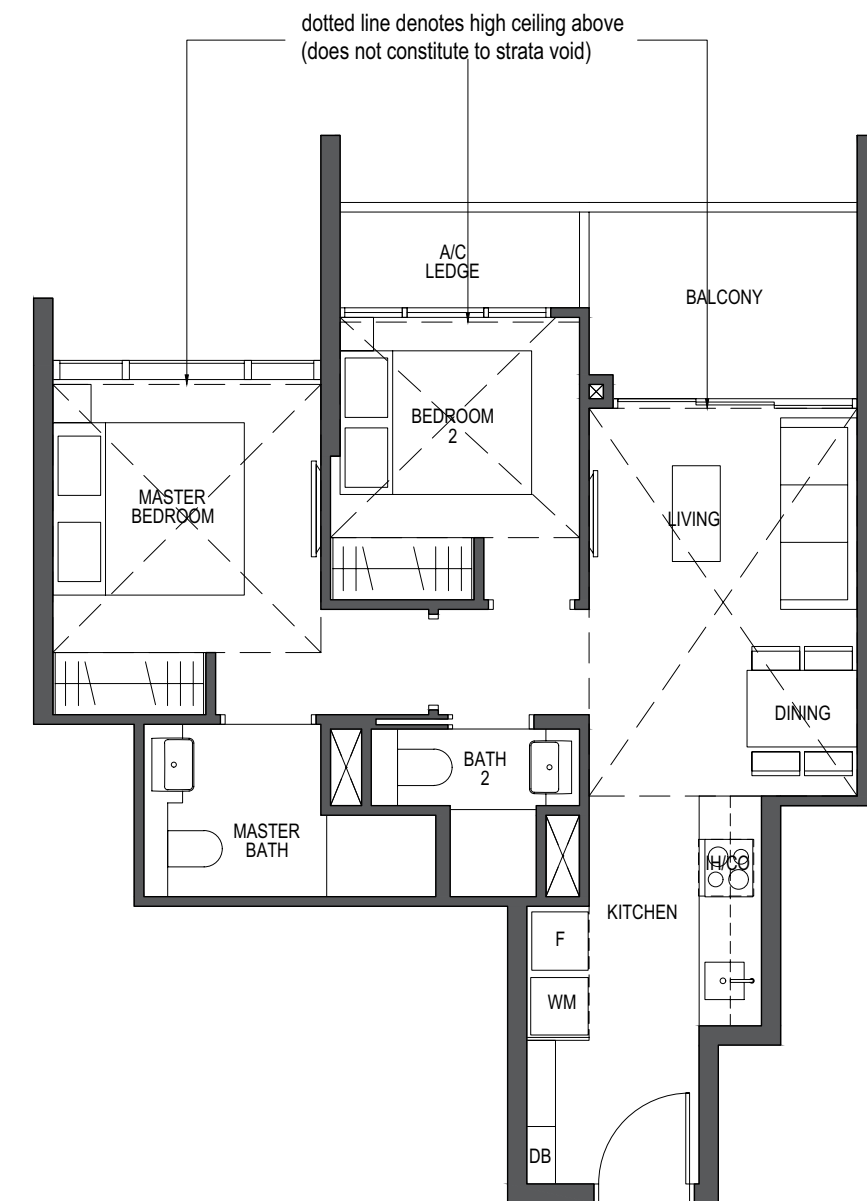
## TYPE PH-2

### 2-Bedroom

62 sq m / 667 sq ft

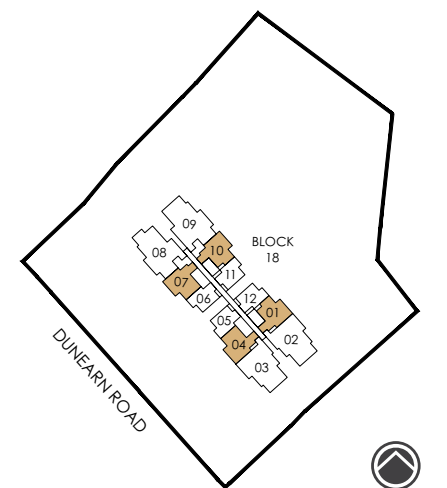
#30-01 & #30-07  
\*#30-10 & #30-04

\*Mirror image



**LEGEND:**  
 F - Fridge  
 D - Dryer  
 IH - Induction Hob  
 DW - Dishwasher  
 GH - Gas Hob  
 DB - Distribution Board  
 WM - Washer cum Dryer  
 CO - Conventional Oven  
 W - Washer

All plans are subjected to amendments as may be approved by the relevant authorities. Floor areas are approximate measurements and are subjected to final survey. BP Approval No. A1720-00009-2018-BP01 dated 26/08/2019



# Penthouse

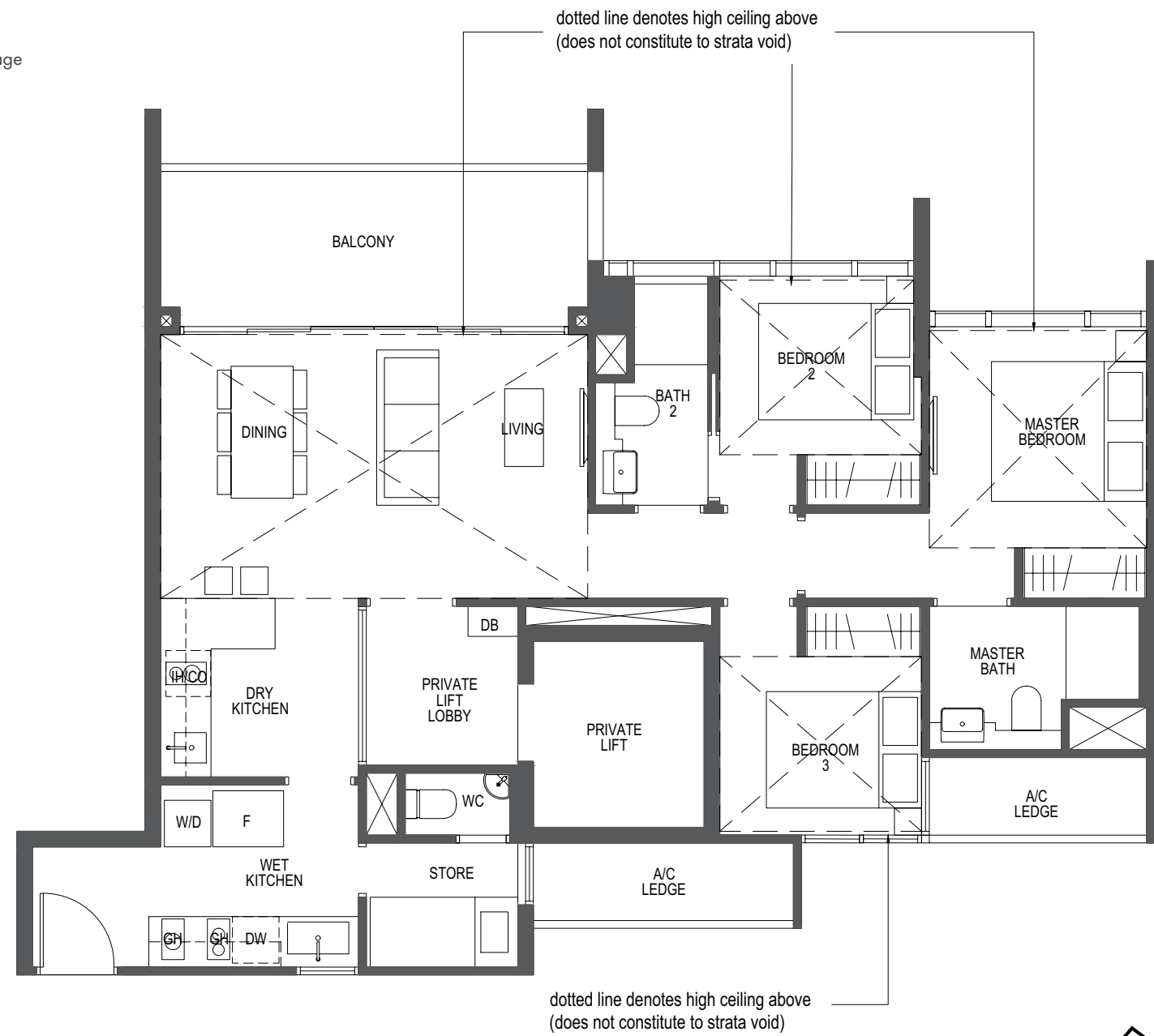
## TYPE PH-3

### 3-Bedroom

108 sq m / 1163 sq ft

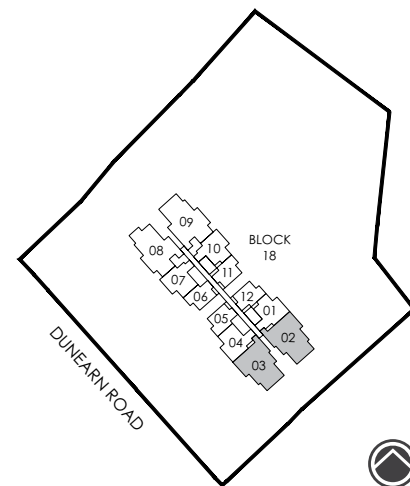
#30-02  
\*#30-03

\*Mirror image



**LEGEND:**  
 F - Fridge  
 D - Dryer  
 IH - Induction Hob  
 DW - Dishwasher  
 GH - Gas Hob  
 DB - Distribution Board  
 WM - Washer cum Dryer  
 CO - Conventional Oven  
 W - Washer

All plans are subjected to amendments as may be approved by the relevant authorities. Floor areas are approximate measurements and are subjected to final survey. BP Approval No. A1720-00009-2018-BP01 dated 26/08/2019



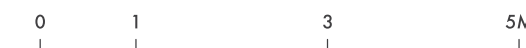
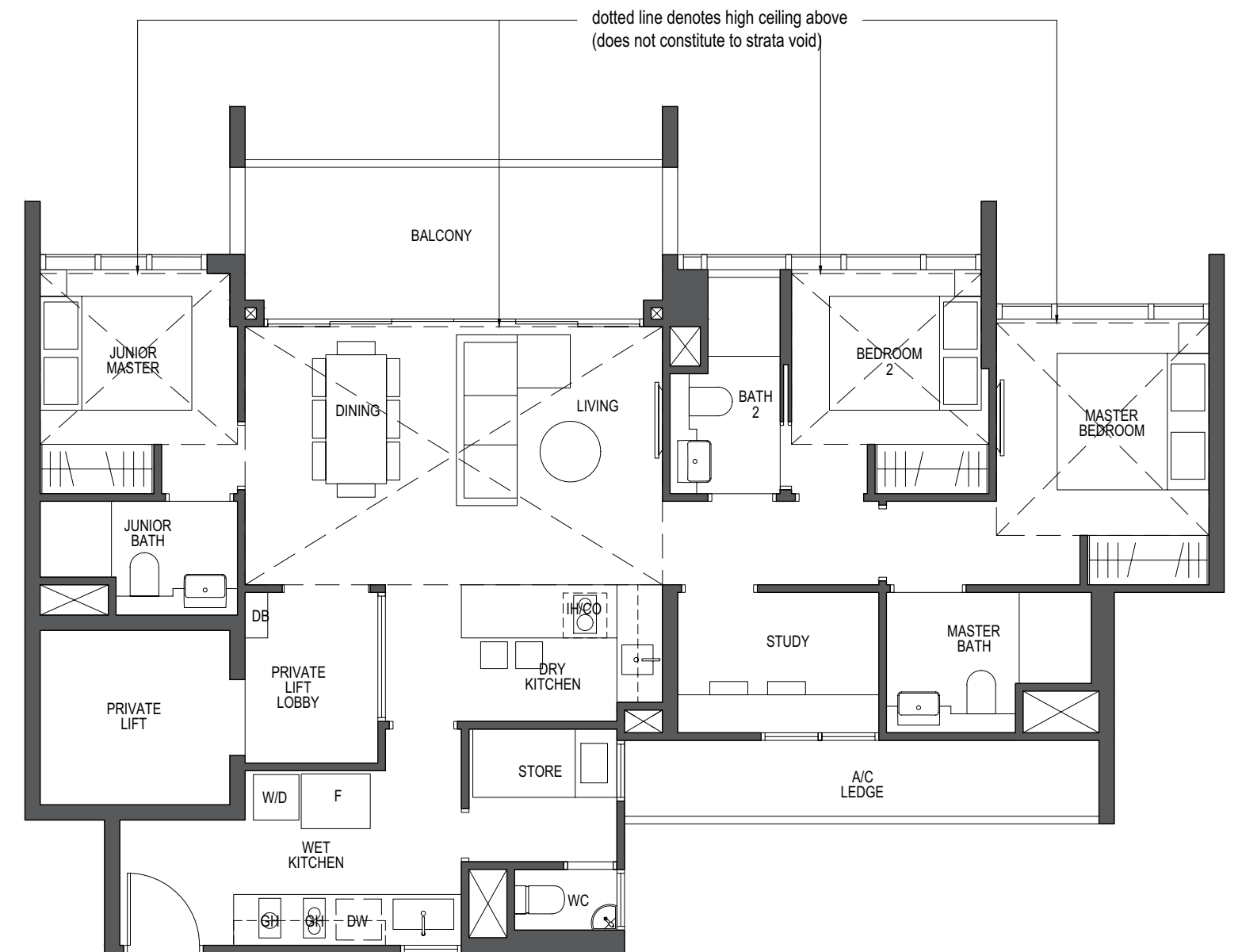
# Penthouse

## TYPE PH-4

### 3-Bedroom+Study

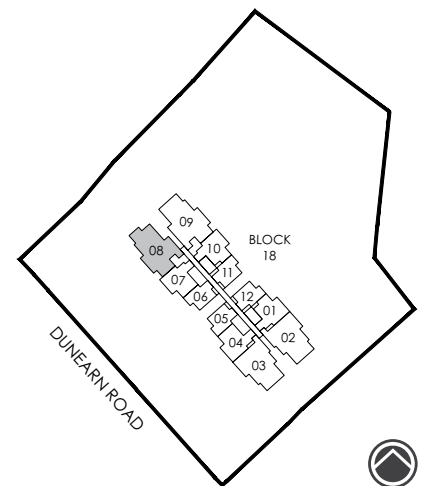
119 sq m / 1281 sq ft

#30-08



**LEGEND:**  
 F - Fridge  
 D - Dryer  
 IH - Induction Hob  
 DW - Dishwasher  
 GH - Gas Hob  
 DB - Distribution Board  
 WM - Washer cum Dryer  
 CO - Conventional Oven  
 W - Washer

All plans are subjected to amendments as may be approved by the relevant authorities. Floor areas are approximate measurements and are subjected to final survey. BP Approval No. A1720-00009-2018-BP01 dated 26/08/2019





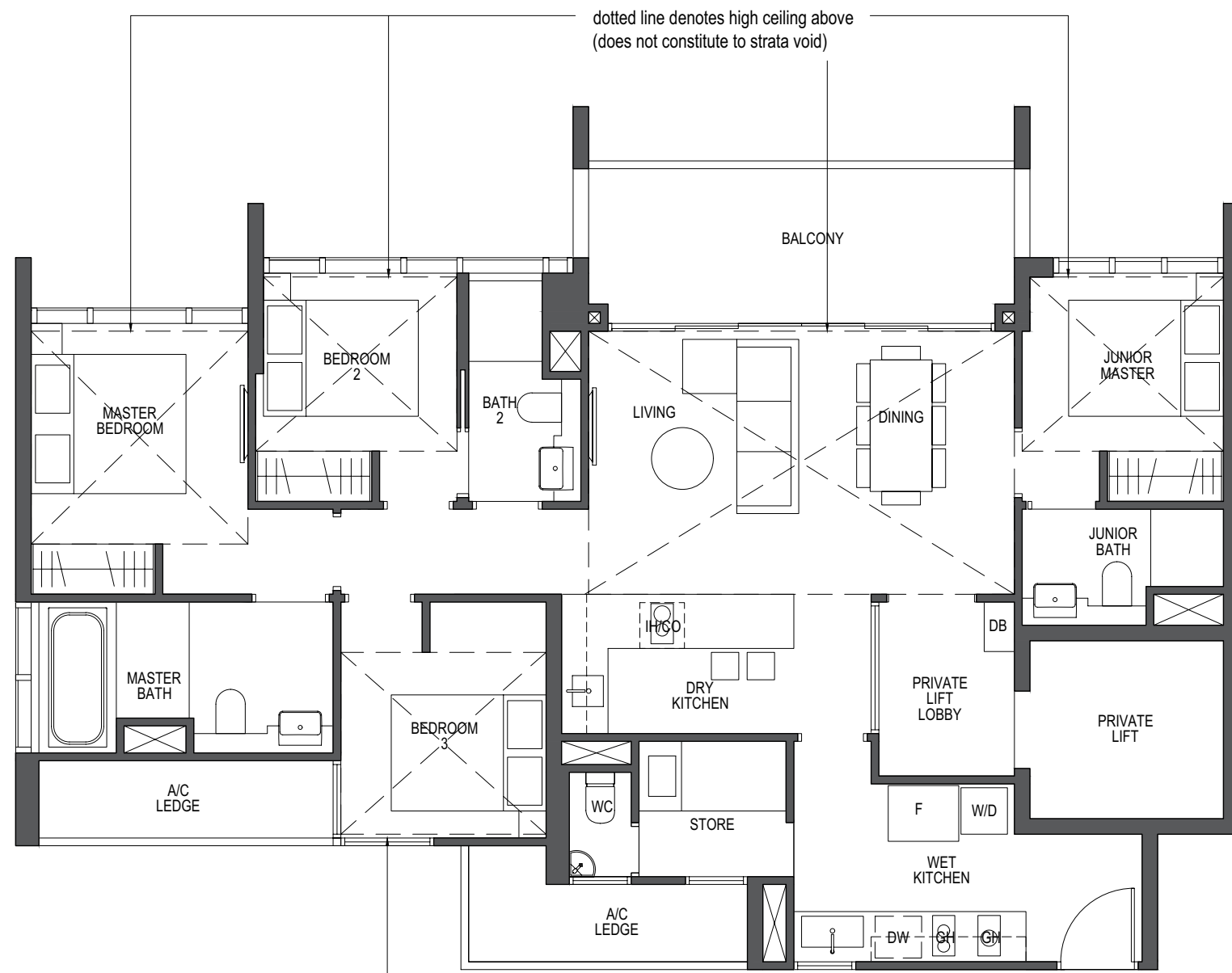
# Penthouse

## TYPE PH-5

### 4-Bedroom

128 sq m / 1378 sq ft

#30-09

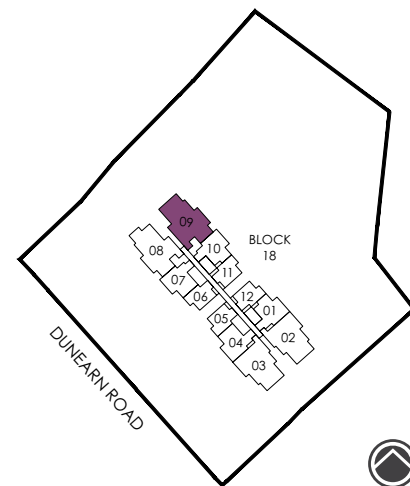


dotted line denotes high ceiling above  
(does not constitute to strata void)

dotted line denotes high ceiling above  
(does not constitute to strata void)



<b>LEGEND:</b>		
F - Fridge	DW - Dishwasher	WM - Washer cum Dryer
D - Dryer	GH - Gas Hob	CO - Conventional Oven
IH - Induction Hob	DB - Distribution Board	W - Washer



# Corporate Profile



EL Development Pte Ltd first started as a business unit within one of Singapore's leading builders, Evan Lim & Co. Pte Ltd, before its inception as a separate company in June 2007.

The company has developed more than 3,000 homes in Singapore, including Illuminaire on Devonshire, Parc Centennial in Kampong Java Road, Symphony Suites in Yishun and Parc Riviera in West Coast Vale.

Come late 2021, the company will usher in its first hotel development — the first Pullman Hotel in Singapore, managed by Accor. Located at Hill Street, this luxurious 10-storey business hotel comprises 350 rooms with outstanding facilities.

In recognition of its emphasis on quality, design and sustainability, EL Development has won prestigious awards such as FIABCI Singapore Property Awards (2018 & 2019), Asia Pacific Property Awards (2018 – 2019), Asia Property Awards Singapore (2017), BCA Asia Top Ten Developers Award (2016 & 2017), BCA Green Mark Award (2016 & 2018), SME One Asia Awards (2013) and Enterprise 50 Awards (2012).



SkySuites 17



La Fiesta



Parc Riviera



Symphony Suites

# Corporate Profile

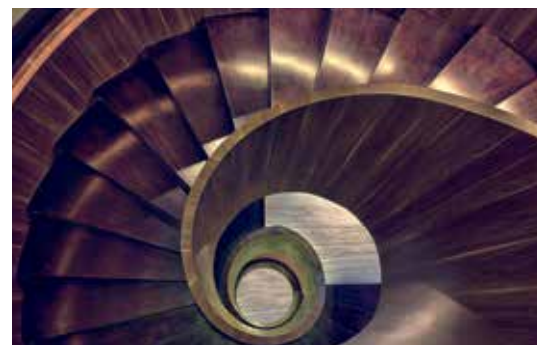


Accor is a world-leading augmented hospitality group offering unique and meaningful experiences in 4,800 hotels, resorts, and residences across 100 countries for more than 50 years.

Beyond accommodations, Accor enables new ways to live, work, and play with food & beverage, nightlife, wellbeing, and coworking brands. To drive business performance, Accor's portfolio of business accelerators amplify hospitality distribution, operations, and experience. Guests have access to one of the world's most attractive hotel loyalty programs—Accor Live Limitless.

Accor SA is publicly listed on the Euronext Paris Stock Exchange (ISIN code: FR0000120404) and on the OTC Market (Ticker: ACRYF) in the United States.

[accor.com](http://accor.com)



Pullman Hotels & Resorts delivers an experience that is upscale, upbeat and perfectly in tempo with the global zeitgeist.

Retaining the values of exploration, comfort and dependability that drove it to become a pioneering travel brand over 150 years ago, Pullman today features 130 worldwide properties including Pullman Paris Tour Eiffel, Pullman Park Lane Hong Kong, Pullman Shanghai South, Pullman London St Pancras and Pullman Sao Paulo Vila Olimpia. Pullman is part of Accor, a world-leading travel and lifestyle group which invites travelers to feel welcome in 4,800 hotels, resorts and residences, along with some 10,000 of the finest private homes around the globe.

[pullmanhotels.com](http://pullmanhotels.com) | [group.accor.com](http://group.accor.com)



*Pullman Shanghai Skyway, China*



*Pullman Bangkok Grande Sukhumvit, Thailand*



*The Park Lane Hong Kong, Pullman Hotel*



*Pullman Paris Tour Eiffel*

